



Mariner Middle School Student Handbook

Welcome to Mariner Middle School,
where every Triton is:

- Ready,
- Reliable,
- Responsible,
- Respectful, and a
- Role Model.

TABLE OF CONTENTS

Attendance	Behavior	Classroom Success	Extracurriculars	Procedures
Attendance	PBIS	ATLAS Project	Assemblies	Bus Riders
Tardy	Student Recognitions	Awards	Clubs	Cafeteria
Morning Care	Student Discipline	Courses	Sports	Dress Code
After-school Care		Grading		"Hallway" Procedures
		GPA		Passes
		Report Cards		Parent Pickup
				Restrooms
Schedules	Communication			Signing out
Bell Schedule	Announcements			Textbooks
School Hours	Communication			Visitors
	Electronic Devices			Walkers/Bikers
	School Counselors			Withdrawals
	Sharing Ideas or Concerns			

ACADEMICS ([BACK TO TOP](#))

For 2024-2025, our school will operate on a seven-period day. The academic year is divided into quarters, and students receive a grade after each quarter. Most classes meet for the entire year, while other classes are one semester in length (like PE or health).

It is important to know which classes are your **core classes**. All your classes are important, but you must pass your core classes every year. Your core classes are:

- **6th, 7th, and 8th Grade English language arts,**
- **6th, 7th, and 8th Grade mathematics (or Algebra I Honors),**
- **U. S. history, civics, and world history, and**
- **6th Grade comprehensive science, life science, and physical science.**

You must earn a passing grade in all four core classes for all three years in order to be promoted to high school.

GRADING

Grades are defined in accordance with the following grading scale:

Letter Grade	Decision	Reference Percentage	Quality Points
A	passing!	90-100%	4
B		80-89%	3
C		70-79%	2
D		60-69%	1
F	not passing (yet)	less than 60%	0

Each quarter grade will be converted into quality points. These points will generate an overall grade point average, which, in turn, will determine the student's final grade for a course. Students and teachers must take care to remember that the GPA requirements for high schools are slightly different than those for middle schools.

GPA

GPA stands for grade point average. You can calculate your GPA each quarter. Convert all of your grades into quality points. Add your quality points up and divide by the number of classes you have. Here's an example:

Class	Teacher	Grade	Quality Points
M/J LANG ARTS 3 ADV	Symonette, R	F	0
FUND OF CUL CAREERS	Fitzgerald, N	A	4
M/J GLOB PERS 3 CLS	Peschel, P	D	1
M/J GRADE 8 PRE-ALG	Klutsarits, L	C	2
M/J ART WORLD CULTR	Smith, S	D	1
M/J CHORUS 1	Batista, J	B	3
M/J WRLD HIST ADV CP	Gascon, N	F	0
M/J COMPRE PE GR 7/8	Czekalinski, R	C	2
M/J PHY SCI ADV	Johnson, B	C	2
Total Quality Points			15
Number of Classes			9
GPA for the quarter			$15/9 = \mathbf{1.67}$

Here's why GPA matters:

- To play sports in middle school, you must carry a GPA of 2.0.
- To participate in the ATLAS project, you must carry a GPA of 3.5.
- To join the National Junior Honor Society, you must carry a GPA of 3.8.
- Later on, you must carry a 2.0 GPA to graduate high school
- Many scholarships are based upon GPA
- Some honors-level classes even have *bonus* GPA in high school!

We expect all students to do what it takes to succeed! If you have a tough quarter and fall behind, we will work with you. We may temporarily pull you from an elective to provide the help you need to bring up your core grades.

COMMUNICATION ([BACK TO TOP](#))

ANNOUNCEMENTS

There are three formats for announcements at Mariner Middle School.

1. Students involved in television production write, produce, present, and stream announcements each day.
2. Administration uses the school's public address system.
3. The [Lunchtime Update](#) runs during our lunches and is always available on our Website under the Student Section.

Students receive important information and updates from our news productions from 9:35 - 9:45 AM.

During these morning announcements, all students are expected to remain quiet and attentive.

In the afternoon, PM announcements and dismissal information are broadcast from 3:55 - 4:00. Other announcements may be made as needed throughout the school day. However, every attempt will be made to prevent disruption of regularly scheduled class activities.

During the morning announcements, Florida Law requires the Pledge of Allegiance to the flag to be recited in each school in the state of Florida at the beginning of each day. Students are expected to stand at attention as the Pledge is recited. Upon receipt of a **written request by his or her parent**, a student has the right not to participate in reciting the Pledge. This includes not standing and placing the right hand over his or her chest. (1003.44, Florida Statute).

Florida Law also requires the observation of a moment of silence of not less than one minute.

GOOGLE CLASSROOM

All classes offer a Google Classroom to extend learning outside of the schoolhouse.

1. We use a common naming convention:
 - a. <TEACHER>-<SHORT SUBJECT>-<PERIOD>
 - b. Example: Mrs. Peschel-Global Perspectives-Period 7
2. The course description, course requirements, objectives and grading policy will be posted there..
3. The course assignments will be posted there.
4. You also may be directed to submit assignments through Google Classroom.

SCHOOL MESSENGER

School Messenger can convey general class information to students and parents such as upcoming tests, projects, or missing work quickly and easily.

SOCIAL MEDIA, SCHOOL

Our school uses Facebook, our school website, and the Triton Update to communicate publicly.

ARRIVAL AND DISMISSAL ([BACK TO TOP](#))

BIKERS, SKATEBOARDS, AND WALKERS

Students who walk, bike, or skateboard to school should be particularly careful during arrival and dismissal.

Bicycles/skateboards must be parked in the rack provided. Students are to provide and use locks for their bicycles/skateboards. Students who ride their bicycles/skateboards in an unsafe manner or who interfere or impede the flow of traffic – including school buses – can be denied the privilege of riding their bicycles/skateboards to school. **State law requires that all bicycle riders must wear helmets.**

BUSES ([BACK TO TOP](#))

It is a privilege to be able to ride the bus to and from school. Your bus driver has your safety in mind and has established rules with this in mind. These rules are posted at the front of the bus. The driver may refer students who do not abide by bus rules to the office. If you are referred to the office, you may lose your ridership privileges temporarily or permanently.

BUS RULES

- Stand off roadway while waiting for the bus
- Remain seated at all times when bus is moving
- Keep arms and head inside window
- Walk ten (10) feet in front of bus; wait for driver's signal before crossing road
- Unnecessary conversation with the bus driver is dangerous; remain quiet
- Outside of ordinary conversation, classroom conduct is to be observed
- Absolute silence is required at railroad crossings
- The driver is in full charge of the bus and students; **students must obey the bus driver**
- The driver can and will assign students to certain seats
- No eating, drinking, or chewing gum is allowed
- Students must be on time; it is recommended you arrive 20 minutes prior to your scheduled pickup time
- Students may only get on/off the bus at their designated stops

BUS CHANGES

Bus changes will be made **only for emergencies**. Students must bring a note from parent/guardian to the front office **before 11:00 am** for approval. Students can only hold a seat on one bus for the year therefore students are not allowed to ride a bus other than their own.

LATE BUS PROCEDURES

Whenever drivers are absent or routes don't have a driver assigned, buses may be late. Mariner Middle School employs the following procedures when waiting for late buses.

1. Teachers will display the [dismissal board](#) at 3:55 PM. Students, parents, and guardians may also use this to track bus arrivals.
2. Office staff will use the intercom to dismiss walkers, bikers, and parent pickup students in whatever order is most efficient at 4:00 PM. Students must pay attention to these announcements as well as the dismissal board.
3. Riders of missing buses will remain in their Period 7 class, monitoring the dismissal board. When a bus arrives, riders must report to the bus immediately. Again, it is very important that students **pay attention to the dismissal board** to avoid missing the bus.
4. At 4:15, teachers will leave their classrooms with any remaining bus riders, and accompany them to the cafeteria.
5. Students must sit immediately upon arrival at the table assigned for their bus.

6. Students must continue to monitor the dismissal board for arrivals. The supervisor will also call bus arrivals over the PA system.
7. To use the restroom, get a drink, or to take care of other needs, students must raise hands. An adult supervisor will assist.
8. Bus supervisors will provide ongoing details of bus progress and late buses after 4:30 on the [dismissal board](#).

Transportation functioned more smoothly in 2024-2025. However, students must remember that the cafeteria is an extension of the bus ride home. Students that misbehave in the cafeteria may be suspended from bus transportation.



PARENT PICK-UP ([BACK TO TOP](#))

Students must be picked up and dropped off only via the **Parent Pick-Up lane** in the front of the school directly off of Chiquita Blvd. Vehicles should always pull all the way forward and must not be left unattended. During afternoon pick-up students must wait to load their vehicles until instructed to do so by the Parent Pick-Up Supervisor. Students may not be picked up or dropped off in the front parking lot, the rear parking lot, on the side streets near the school, or at the public library.

Our pick-up moves quickly once students and parents learn and implement the procedures. Please pay attention for your car's arrival. Do not cross the loading zone while cars are moving, but please do load as soon as the parent pick-up supervisors give you the the go-ahead.

SIGNING OUT OF SCHOOL ([BACK TO TOP](#))

If a parent must sign a student out early from school they **MUST** come to the front office with a photo ID. The office will not call you from class until your parent/guardian is present. Only people with ID designated on the emergency card can sign a student out. Please make sure your pickup is up to date in Focus. If possible, please schedule outside appointments after school hours whenever possible to allow students maximum time in class.

We will not sign you out if your parent/guardian arrives after 3:30.

ASSEMBLIES ([BACK TO TOP](#))

Assemblies are held during the year for the benefit of the student body. Assembly behavior should be refined and courteous. All students should give the speakers and/or performers their undivided attention. Gestures of appreciation should be in the form of applause. Rudeness, inattention or other poor behavior will be subject to disciplinary action.

THE ATLAS PROJECT ([BACK TO TOP](#))

The ATLAS Project is an optional academic program that Tritons may elect to join. ATLAS is an acronym that stands for "Ambitious Thinkers Learn, Achieve, and Succeed."

You may know that an atlas is a type of map that can help you find your way. At Mariner Middle School, the ATLAS Project charts a pathway to middle school academic excellence, much like a map. You also may have read that Atlas was a character in Greek mythology who held up the entire sky on his shoulders. The ATLAS Project is *your* foundation, so that when you go to high school and beyond, the sky's the limit!



The goal of the ATLAS Project challenges members to master academic standards, to demonstrate that mastery with high grades and proficient assessments, and to earn a seat in a rigorous high school program such as International Baccalaureate (IB), Cambridge (AICE), Advanced Placement (AP), or dual enrollment. ATLAS members prepare for these programs by:

- maintaining a 3.5+ GPA (As and Bs) in advanced core classes,
- competing in one or more academic competitions (school science fair, history fair, debate, district spelling bee, book battle, essay competition, etc.),
- earning credit in a foreign language,
- earning credit in one or more fine arts or performing arts courses,
- earning credit in a technical elective, such as horticulture/culinary or technology/robotics,
- participating in a community project (student council, NJHS, Builder's Club, or the Community Service Project), and
- maintaining excellent attendance and disciplinary records.

During their three years at Mariner Middle School, ATLAS Project members will monitor their progress with support from their teachers and the ATLAS Committee. During the year, we will invite representatives from our local high schools to speak about their programs, such as IB, AICE, or dual enrollment.

Eighth graders earning ATLAS designation will be recognized at the eighth grade awards ceremony and will receive a special letter of recommendation to accompany their application to the school or program of their choosing.

[ATLAS Application](#) (for new members)

[ATLAS Continuation](#) (for returning ATLAS members)

ATTENDANCE ([BACK TO TOP](#))

All students are required to be on time (**9:35 AM**) and present each day school is open during the school year. Students may not be absent from school without permission of the principal/designee. While a note from a parent/guardian is a request that a student's absence be excused, the school principal or designee is the only person authorized to excuse a student's absence.

Steps to follow when absent:

1. Have a parent or guardian call the school and inform the office of your absence before 10:15 AM on the day of the absence. The direct number to the front office is **(239) 772-1848**.
 2. To request consideration for an excused absence, your parent/guardian should upload the excuse through Focus Parent Portal. They need to provide your name, date, date of absence, reason for absence and his/her signature. The principal is the only person who can excuse absences.
 3. Ask all teachers for make-up assignments when you return. **You are responsible for completing makeup work.** You have the number of days absent plus one to complete all makeup work.
- A Pattern of Non-Attendance
 - Five (5) unexcused absences in a calendar month
 - Ten (10) unexcused absences within a 90-day period

When students show a pattern of non-attendance, the principal may refer the student to the child study team for truancy proceedings.

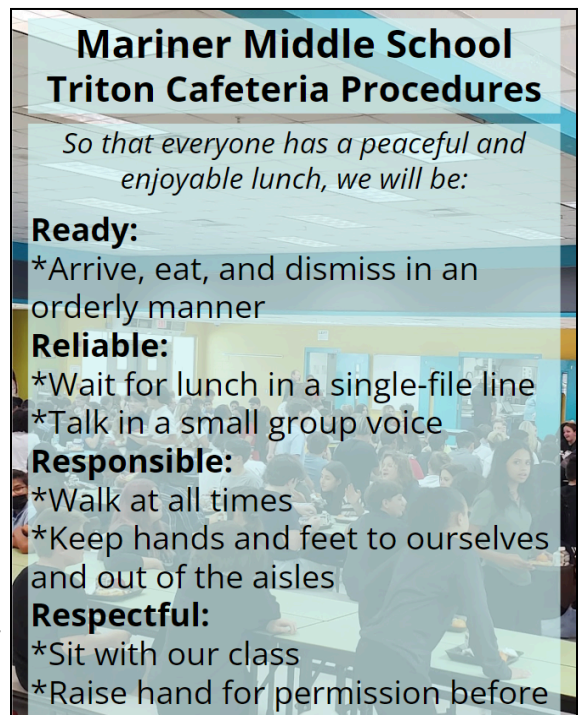
CAFETERIA ([BACK TO TOP](#))

Mariner Middle School offers both breakfast and lunch in our cafeteria. Students must respect the rights of others as they would in any other classroom.

Students may not move from one table to another. Each table is responsible for cleanup and disposal of trash at the end of lunch to clean their own tables and appropriately dispose of their trash. **Food and drink must be stored in a lunch box during the day and must be consumed only in the cafeteria.**

Energy Drinks are NOT permitted on campus. Glass bottles are not permitted on campus. All students are to remain in the cafeteria during their lunch period, unless they possess a

Las versiones en español del manual están disponibles



**Mariner Middle School
Triton Cafeteria Procedures**

So that everyone has a peaceful and enjoyable lunch, we will be:

Ready:
*Arrive, eat, and dismiss in an orderly manner

Reliable:
*Wait for lunch in a single-file line
*Talk in a small group voice

Responsible:
*Walk at all times
*Keep hands and feet to ourselves and out of the aisles

Respectful:
*Sit with our class
*Raise hand for permission before

written pass from a teacher or are using PBIS kudos to sit outside with friends.

CELL PHONES [See Electronic Devices](#)

CHANGE OF ADDRESS/PHONE NUMBER ([BACK TO TOP](#))

If your address or parent/guardian contact information changes, please remind them to call the school to make the changes. It is really important that we can contact your parent/guardian in the event of an emergency!

CLINIC ([BACK TO TOP](#))

The school nurse and/or clinic assistant provides temporary care for injuries and illness. If a student is ill, parents are requested to keep him/her at home, as we are not equipped to keep sick or injured students for extended periods of time.

In order to use the clinic, **your parents must provide permission** to the school. This permission is in the beginning-of-the-year Focus Forms and is required by state law. All parents should complete the **emergency contact forms, also in Focus**; this information should be kept updated as these are used in case of emergency for all students.

If a student must take medication, arrangements should be made with the attending physician so that the medication may be given at home before and/or after school hours. If this is not possible, the medication may be given at school only if failure to take it could jeopardize the student's health. The Parent Permission for Medication Form MIS/398, available from the school, must be filled out by the student's parents. The permission form and medication (fully labeled) must be brought to school in the original container and must be given to the clinic for distribution to the student.

Starting in 2023-2024, students may carry and self-administer headache medications on school property without a doctor's note or prescription. To do this, a parent/guardian and the student must file an authorization form with our clinic. [The form is located on the district website.](#)

If a doctor orders other nonprescription medication, such as cough medicine, it will be necessary for the doctor to give the parents a written note to send to the school. The container of nonprescription medication must be labeled with the student's name and directions concerning dosage. The medication must be given to the clinic for distribution to the student. If any medication is needed for more than a two-week period, the Doctor's Permission for Medication (Form MIS/401) must also be completed.

CLUBS, SPORTS, AND EXTRACURRICULARS ([BACK TO TOP](#))

Our students have some great opportunities while at Mariner Middle School, and it is our hope that every student will engage with an extracurricular activity. Which clubs might interest you?

- 3-D Printing Club
- Art Club
- ATLAS

- Basketball
- Battle of the Books
- Best Buddies
- Builders Club
- Chess Club
- Choir Club
- Cross-Country
- Dungeons and Dragons Club
- Debate Team
- Geography Bee
- Golf
- History Fair
- Inventors Fair
- Math Team
- National Junior Honors Society
- Science Fair
- Soccer
- Special Olympics
- Spelling Bee
- Student Council
- Tennis
- Track
- Volleyball

COUNSELING SERVICES ([BACK TO TOP](#))

Mariner has a skilled, caring, counseling team with school counselors, a licensed mental health professional, school psychologist, and a school social worker. Each of these team members is available to help students concerning a variety of situations including course selections, test score interpretation, problems in a particular class and problems dealing with home situations. Students may make an appointment at the Student Services desk or by asking a teacher to send an email to the guidance department.


Parents may make a request for a parent-teacher conference or other counselor meeting by calling the front office at 239.772.1848 and requesting a conference.

DISCIPLINE ([SEE PBIS](#))

DRESS CODE ([SEE STUDENT DRESS](#))

ELECTRONIC DEVICES ([BACK TO TOP](#))

The Lee County School District assigns a Chromebook and G-Suite account to every student. Students may use their account, device, protective sleeve, and charger during the school year for school work. Students are reminded that the material is owned by the district, and all electronic activities and search history are saved and monitored for each device and are linked to each student’s account. Students may receive school discipline if they use their Chromebook or Google Account inappropriately.



Wireless Communications Devices must be powered OFF and stowed in your backpack during the school day.

First Infraction: Warning, written guidelines provided, parent contact (School Messenger).

Second Infraction: Parent Pickup of Device and In-Person Parent Conversation, written guidelines provided.

Third infraction: Parent Pickup of Device, Disciplinary Referral (INS), written guidelines provided

Fourth Infraction; Parent Pickup of Device, Disciplinary Referral (INS), Parent Conference, written guidelines provided.

Students may possess wireless communication devices (mobile phones, smart watches, wireless headphones, earbuds, etc.) while on campus. However, these devices must be powered off and in backpacks per School District Policy unless authorized by a school official. Students may never use their wireless communication devices to take pictures or video of others. Wireless communication devices are sometimes quite expensive. Please be advised that **neither the school nor school district will accept responsibility for loss, damage, or theft**: It is best to leave your wireless communications devices at home.

Students also must understand that inappropriate mobile communications can cause a great deal of distractions and safety concerns during the school day. Therefore, violations of the electronic device guidelines carry disciplinary consequences:

EMERGENCY DRILLS ([BACK TO TOP](#))

Drills will be held at regular intervals. These drills are necessary to ensure the student's safety in the event of a real emergency. Orderly and quiet behavior should prevail during all drills. Guides for evacuation and assembly are posted in each classroom. Students will be given specific instructions by faculty during such situations.

HALLWAY PASSING BEHAVIOR ([BACK TO TOP](#))

Mariner Middle School passing periods are three minutes in length. Our campus is outside and rather large, so students must pass directly from class to class. While students may be late from time to time, students are held accountable for tardiness. Please see the [Tardy](#) section for details.

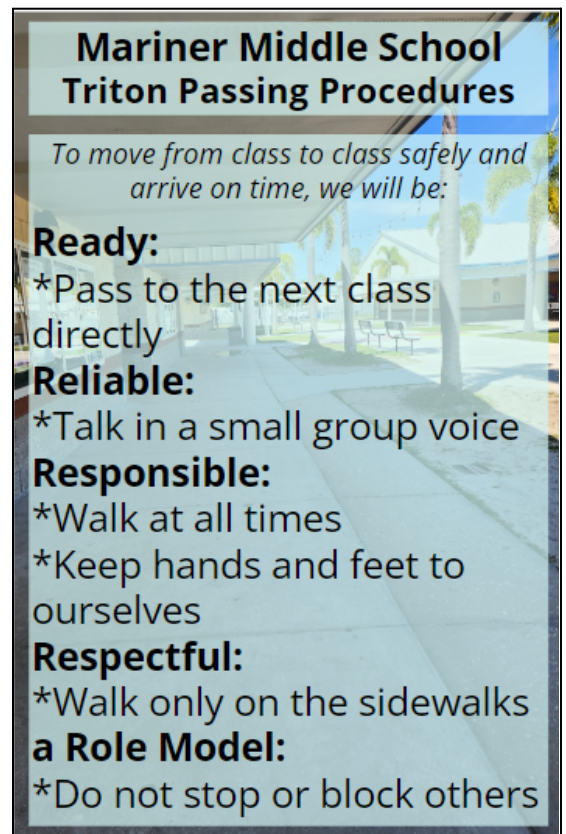
HOME/SCHOOL COMMUNICATION ([BACK TO TOP](#))

FOCUS PARENT PORTAL

Parents must set up an account in Focus for real-time access to their student's gradebooks and to approve various forms for their student. Directions for setting up the Focus Parent Portal can be found in the front office and [here](#). Student grades are available 24 hours a day and can be accessed using Focus Parent Portal. Grade reports are by subject and reflect the student's current grade. You can also view attendance reports.

GOOGLE CLASSROOM

Nearly all of our classes use Google Classroom to house information, to communicate with students and families, and to assign assignments or assessments.



TRITON UPDATE

Parents receive a newsletter monthly (or more frequently). It is posted on the [school website](#).

SCHOOL MESSENGER

Teachers often use School Messenger to communicate with students and families. It enables teachers or administrative staff to communicate via voice, text, and email in multiple languages. For example, each Triton Update is accompanied by a School Messenger that informs parents of its posting.

LOST AND FOUND ([BACK TO TOP](#))

The Lost and Found is located in the media center. If you find something, please turn it into the office as you would want the same courtesy.

MEDIA CENTER ([BACK TO TOP](#))

Mariner Middle School offers a media center that provides learning, supplemental and recreational materials in the form of books, magazines, and audio-visual materials. Mariner Middle is also fortunate to have the regional library next door which can be visited by teachers during the school day. Use of the media center is a privilege, and a pass from your teacher is necessary if you want to use the media center during school hours. **If books are not returned you may not be able to participate in special activities such as field trips, dances, etc.**

MONEY AND VALUABLES ([BACK TO TOP](#))

Large sums of money or valuables should not be brought to school. This includes high value items such as jewelry, smartphones, smartwatches, bluetooth headphones or earbuds, or personal items that carry high sentimental value. **NEVER LEAVE VALUABLE POSSESSIONS UNATTENDED. THE SCHOOL WILL NOT BE RESPONSIBLE FOR RECOVERY OF ANY OF THESE ABOVE MENTIONED ITEMS THAT ARE TAKEN DURING SCHOOL HOURS.**

PARTICIPATION IN PHYSICAL EDUCATION ([BACK TO TOP](#))

Physical Education classes at Mariner Middle School offer students a chance to learn, understand, and appreciate the important aspects of physical fitness, learn lifelong skills and enjoy and develop an active lifestyle. PE is a state requirement, and most Tritons will take PE every year.

For the sake of good health and comfort, students **MUST** dress out for physical education. The appropriate attire for physical education is determined by the physical education faculty. Uniforms and a rented combination lock can be purchased from the school (currently \$25.00 for the uniform and lock rental.) Your PE coach can help you if the cost is an issue.

Please remember that your personal items must be locked securely in the PE lockers. School staff members are not responsible for personal items.

PASSES ([BACK TO TOP](#))

Students must always have a pass from a teacher to be out of their assigned area. This includes passes to the restroom, clinic, main office, media center, and guidance office or to other teachers. Students may only report to the destination on their pass and return quickly and efficiently to class.

We use the SilentPass system for general passes, and students earn two passes per day. Teachers may elect to use written passes as well for teacher-directed passes. In any case, students can receive disciplinary consequences when they are in an unauthorized area. Always remember to get a pass!

PBIS (POSITIVE BEHAVIOR INTERVENTION AND SUPPORTS) ([BACK TO TOP](#))

We expect all Tritons to be:

- Ready
 - Attend every school day, unless you are sick
 - Get a good night's sleep
 - Be prepared for class, and be on-task in class.
- Reliable
 - Be where you are supposed to be, and be on time to your destination.
 - Tell the truth to your friends, to yourself, and to adults on campus
- Responsible
 - Accept responsibility for your actions that result in negative *or positive* outcomes.
 - Trash always belongs in a receptacle and never on the floor, in the courtyard, or in the restrooms.
 - Complete assignments and tasks on time and by the due date.
- Respectful
 - Be kind—to your teachers, staff members, your friends, and your family. Whether you are in the middle of a project or in a disagreement, kindness goes a long way to finding a solution.
 - Gum and Candy are prohibited. Food is prohibited outside the cafeteria unless provided by your teacher as part of a classroom activity. Any food provided by a teacher must be consumed within that class. Food for lunch will be stored in your lunch box within your backpack. You will be directed to discard any food you take outside of the cafeteria.
 - Obscenity, profanity, and inappropriate gestures do not reflect you in a positive light and are prohibited.
 - If you're not OK with behavior directed towards you, say so. Be clear and direct. If the behavior continues, seek help from an adult *before* the situation escalates. This is NOT "snitching;" it is showing respect for yourself.
- Role Model

- Take advantage of every opportunity to demonstrate your mastery of learning objectives: Zeros aren't permitted!
- Treat others in the way you would like to be treated.

These five expectations describe a successful Mariner Middle School student. We all share the responsibility for making Mariner a special place where everyone feels valued and where excellence in performance is the ultimate goal.

No one is perfect, and sometimes we may not meet these expectations. To support you in making positive future choices, we implement a schoolwide discipline plan. Most students respond to opportunities to correct negative behaviors. However, our disciplinary system is progressive, which means that repeated, similar misbehavior will result in elevated consequences. Please see the [Discipline Section](#) under PBIS for more information.

RECOGNITIONS ([BACK TO TOP](#))

Teachers institute classroom awards throughout the school year for outstanding work, positive attitudes, academic improvement, and personal growth.

We recognize Academic Honor Roll each nine weeks. Honorees are determined by letter grades:

- The High Honor Roll includes students with all As.
- The Honor Roll includes students with As and Bs.
- Academic Growth Awards includes significant growth across diagnostic windows

At the end of the year, we hold awards assemblies to recognize students who have earned:

- Subject Area Awards as nominated by their teacher(s)
- Citizenship Award (Tier I Attendance, Behavior, and Classroom success across all three quarters)
- Quarter 1, 2, and/or 3 Honor Roll
- Perfect attendance
- 4.0 GPA for three years (8th Grade only)
- Perfect attendance for three years (8th Grade only)
- ATLAS designation (8th Grade only)

Kudos in the Focus gradebook are used to recognize the positive things students are doing on campus. Students can earn kudos from any adult at any time when they demonstrate one of our five expectations. Kudos accrue in a "bank," and students have a menu of rewards to select from. Kudos accrue throughout the school year but do not carry over from one grade to the next. Our current Kudo menu includes:

Schoolwide Menu	Cost	Who to Ask?
Tardy Pass (<2 minutes late)	5	Teachers
Golf Cart Ride to Class	50	Principal

Principal for a Day	100	Principal
Teacher vs. Student Game: Compete	25	Team leads
Teacher vs. Student Game: Spectator	10	Team leads

Lunchtime Menu		
Sit outside at lunch with two friends	5	Cafe Staff
Library Pass	5	Cafe Staff
Popcorn in cafeteria	10	Cafe Staff
Hot Chocolate	10	Cafe Staff
Icy Pops	10	Cafe Staff
Classroom/Grade Level Kudos		
<u>Your teacher will share ways you can redeem your kudos</u>		Classroom teacher

DISCIPLINE ([BACK TO TOP](#))

In a well-organized community, there is always a need for rules and regulations to guide its members. Failure to act responsibly and to recognize the rights of others requires corrective action which may include school discipline.

The chart on the next page provides a descriptive outline of the Discipline procedures for Mariner Middle School:

Teacher (Classroom) Management Plan

Step

0. **Classroom Management Plan:** Your teachers will implement a well-designed, consistent, and positive classroom management plan. Hopefully, you will never earn a minor infraction!
1. **Minor Infraction (#1) in Focus:** Your teacher will document the negative behavior and the correct replacement behavior with you. Your teacher may assign classroom consequences or team consequences such as a team time-out. Your teacher may contact your parent or guardian.
2. **Minor Infraction (#2) in Focus:** Your teacher will document the negative behavior and the correct replacement behavior with you. Your teacher may assign classroom consequences or team consequences such as a team time-out. Your teacher may contact your parent or guardian.
3. **Minor Infraction (#3) in Focus:** Your teacher will document the negative behavior and the correct replacement behavior with you. Your teacher may assign classroom consequences or team consequences such as a team time-out. Your teacher may contact your parent or guardian.
4. **Standard Discipline Referral:** After three minor infractions for the same behavior and a parent contact, your teacher will refer your behavior to the office for additional support.



School (Administrative Referral) Plan

- **Referral 0-1:** Remaining at Tier I is the goal of every student. Students should be able to correct negative behavior and display positive behavior with a minimum of administrative direction.
- **Referrals 2-5:** Tier II—These students will be monitored and may be entered into MTSS for behavior.
- **Referrals 6+:** Tier III—these students receive the most intensive support, including possible MTSS behavior plans, pass restrictions, and/or check in-out with administration or school counseling. **Referral 10+:** This is rare and serious. The school will schedule an administrative hearing with parents to discuss your options moving forward. At the conclusion of the hearing, the principal may recommend you for placement at another school.



District Disciplinary Plan

- Occurs when PBIS, MTSS, and disciplinary consequences are not successful in encouraging appropriate student behavior.
- The school will schedule an administrative hearing with you and your parent/guardian. At the hearing, the Assistant Principal for Discipline and Attendance presents disciplinary steps that have brought us to the meeting. You would have an opportunity to share your perspective, the parent/guardian has an opportunity to share their perspective, and the principal may ask questions of the assistant principal, student, or parent.
- The outcome of a hearing may be a second chance, additional suspension, or recommendation for alternative placement. The district will also review the disciplinary findings and may unenroll you from our school and re-enroll you at Success Academy in Fort Myers for 45 or more days.
- **Do Not Return:** In some cases, particularly when a target of student misbehavior remains on campus, school administration may issue a Do Not Return directive. In these cases, you would not be permitted to return to Mariner Middle School after completion of Success Academy.

REPORT CARDS ([BACK TO TOP](#))

Electronic report cards are issued to students each nine weeks through Focus. They serve as a progress report indicating an academic grade and the instructor's comments for each subject in which the student is enrolled. Attendance is also reported on this form. Interim reports are also posted electronically halfway through each quarter. As always, parents and students can access real-time grade and attendance information in Focus. For more information, see the [Academics](#) section.

RESPECT FOR EQUIPMENT AND FACILITIES ([BACK TO TOP](#))

Each student is encouraged to assume responsibility for the care of school property. Accidental damage of school property generally requires reimbursement by the student for repair or replacement. Malicious damage must be repaired or replaced at the student's expense and also will result in discipline.

RESTROOM PROCEDURES ([BACK TO TOP](#))

All students must follow the restroom procedures. Students failing to follow the established procedures may receive school discipline.

SCHOOL HOURS ([BACK TO TOP](#))

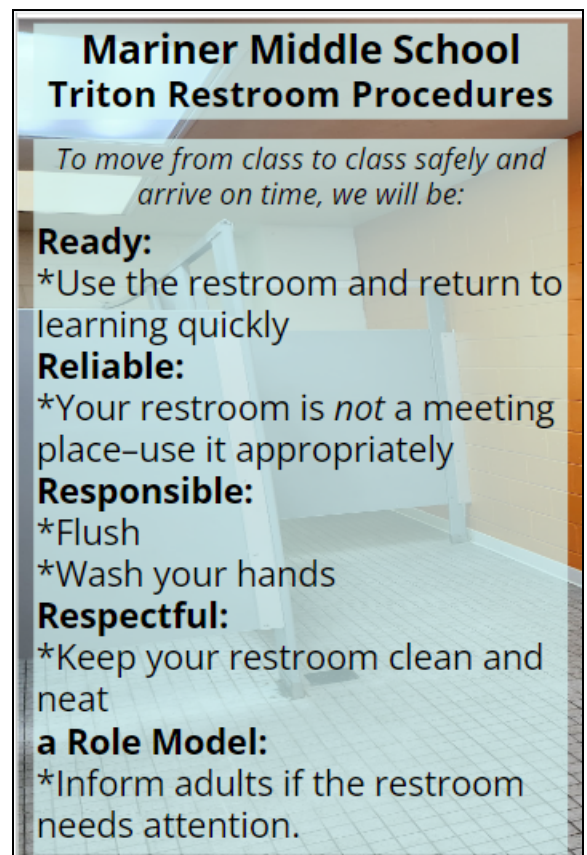
School Office hours for the school year are 8:00 AM – 5:00 PM. Students are in class from 9:35 AM – 4:00 PM.

Students are not to be in or around the building prior to 9:20 AM or after 4:00 PM without prior approval from the principal. Students may only be on campus prior to 9:20 AM or after 4:00 PM if supervised by a staff member. Even with prior approval, students must be supervised during their stay by a Mariner staff member.

SEXUAL HARASSMENT AND HARASSMENT

Everyone who works and learns in The School District of Lee County has a right to feel respected and safe. If any words or actions make you feel uncomfortable or fearful, you need to tell a teacher, counselor, assistant principal or the principal. Your right to privacy will be respected as much as possible. We take seriously all reports of sexual harassment and harassment based upon race, age, national origin and disability, and will take all appropriate action to investigate such claims, to eliminate that harassment, and to discipline any persons found to have engaged in such conduct.

The School District will also take action if anyone tries to intimidate you or take action to harm you because you made such a report. **SEXUAL HARASSMENT AND HARASSMENT BASED ON AGE, RACE,**



NATIONAL ORIGIN AND DISABILITY ARE AGAINST THE LAW. DISCRIMINATION IS AGAINST THE LAW.

Please refer to the Lee County School District Code of Conduct for details.

SHARING IDEAS OR CONCERNS ([BACK TO TOP](#))

Tritons, we listen to you. There are lots of ways for you to share information.

- Do you have a great idea or suggestion? Talk to your Student Council leadership or submit it to [Student Consider This Suggestion Box](#).
- Are you having problems with peers, grades, or other challenges? Contact your school counselor or stop by Student Services in the Media Center. We will work through issues with you!
 - 6th Grade and 7th Grade last names A-L = Ms. Gadus
 - 7th Grade last names M-Z and 8th Grade = Ms. Shircliff
 - Student Services = Ms. Lopez
- For serious **emergencies** that need immediate help, FortifyFlorida gets help right away. Remember, [FortifyFL](#) is for serious emergencies—when you submit a FortifyFL tip, it is sent to every school administrator, the district office, and to the police.

STUDENT ACTIVITIES ([BACK TO TOP](#))

Throughout the year we will have a variety of activities, including dances, fairs, field trips, etc. Even though these trips are sometimes off campus, all school rules apply. Supervision of students will end at the specified ending time of the event. Parents are expected to pick their children up on time or notify the school that they will be late. Student behavior and items past due may be used to determine eligibility in after school student activities.

STUDENT DRESS ([BACK TO TOP](#))

Mariner Middle School encourages our Tritons to dress for success! Our dress code policy clarifies expectations set by the district in the 2024-2025 Student Code of Conduct. The county dress code states:

The purpose of the dress code is to encourage students to focus on the learning process without the distractions of unsuitable dress and grooming, as well as developing good habits that will lead to “dressing for success” in college and career. Students shall maintain a clean, orderly appearance at all times. The responsibility for the personal appearance of the student rests with the parent/guardian and the student. Personal appearance shall not disrupt the educational process. A student who is dressed appropriately is demonstrating a respect for self and others, as well as contributing to a safe and orderly learning environment. The following establishes the minimum acceptable standards for student dress to be interpreted and enforced by the principal or designee. Enforcement will focus on positive guidance without embarrassment to the student and should not disrupt the educational process. Principals have the authority with their staff and community, as permitted by School Board policy, to establish additional standards at individual schools.

Tops:

- *Shirts shall be appropriately fastened in accord with the design of the shirt. The length shall extend beyond the waist level.*

- At Mariner Middle School, “appropriately fastened” means that all buttons save the top button of polo shirts must be fastened, and buttons may not be removed.
- *Clothing that exposes underwear or body parts in an indecent or vulgar manner is prohibited.*
- *Transparent or see-through tops, tops that bare midriff, strapless, low-cut clothing or tops and outfits that provide minimum coverage or are of a suggestive nature are prohibited; halters, backless dresses or tops, tube tops, tank tops, muscle shirts or any clothing which may be distracting are prohibited.*
 - At Mariner Middle School, appropriate tops include
 - polos
 - oxfords
 - crew-neck T-shirts (scoop-neck and v-neck tops are not acceptable)

Bottoms:

- *Apparel shall be adequate in both length and coverage to be considered appropriate for school.*
 - At Mariner Middle School, “adequate length” means that skirts, shorts, or dresses must extend to a minimum of three inches above the student’s knees.
 - At Mariner Middle School “adequate coverage” means bottoms constructed of sturdy material, such as cotton or denim.
- *Pants shall be worn fastened and at the waist with no undergarments showing.*
- *Pants with holes, tears, etc. may not be worn if, in the principal’s judgment, they may cause a disruption to the school environment.*

Footwear:

- *Students must wear shoes at all times that are safe and appropriate for the learning environment.*
 - At Mariner Middle School, “safe and appropriate” means closed-toe shoes with backs or back straps.

Outerwear:

- *The wearing on campus of hats, caps, headgear (including hoodies) or sunglasses except in conjunction with designated school-approved uniforms or at authorized athletic practices or activities is prohibited. There may be certain exceptions for medical conditions, religious observation and physical education classes held outside. The principal will determine these exceptions.*
 - At Mariner Middle School, an appropriate top must be worn under any outerwear.
- *Long/oversized coats, jackets or jerseys are prohibited.*

Miscellaneous:

- **All students must wear their ID badge on a breakaway lanyard at all times.**
- *Any articles of clothing or jewelry that could likely cause injury – such as chains, bracelets, rings and chokers with or without spikes or studs – are prohibited.*
- *Wallet chains of any length are prohibited.*
- *Apparel, emblems, insignias, badges or symbols that promote the use of alcohol, drugs, tobacco or any other illegal activity are prohibited.*
- *Apparel or symbols which may be gang-related may not be displayed on a student’s person or in the student’s possession.*
- *Gang-related tattoos, or other tattoos that may cause a substantial disruption to the educational environment as determined by the principal, are prohibited.*

- *Adornments that, in the principal's judgment could cause injury, be a safety risk or cause a disruption to the school environment may not be worn. Examples of prohibited adornments include, but are not limited to, hoops or rings attached to the nose, eyebrow, cheeks or lips.*
 - At Mariner Middle School, hoop earrings larger than a half-dollar are also prohibited. Again this is to promote safety in the hallways, particularly during congested passing times.
- *Any method of public display (including clothing, nail polish and other items that may be worn or carried) of an organization affiliated with controversial, obscene or illegal activities on a person may not be worn if, in the principal's judgment, they may cause a substantial disruption to the school environment.*

2024-2025 Dress Code Plan

Students with NO recorded dress code violations will earn kudos quarterly

1st Dress Code: Documentation, reteach expectations, correct to Triton dress code.

2nd Dress Code: Documentation, reteach expectations, correct to Triton dress code.

3rd Dress Code: Documentation, reteach expectations, correct to Triton dress code.

4th Dress Code: Documentation, reteach expectations, correct to Triton dress code.

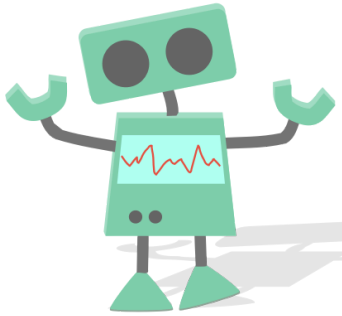
5th Dress Code+: Documentation, reteach expectations, correct to Triton dress code. Parent pick up of item out of Triton dress code.

*****Repeated violations after reteaching and parent contact will result in a disciplinary referral for insubordination*****

TARDY ([BACK TO TOP](#))

Students who arrive late to school (after 9:35 AM) must report to the front office with a note from their parents stating the reason for their tardiness. The line at parent drop-off is sometimes long. Please allow adequate time. Unexcused and/or repeated tardiness will result in disciplinary consequences in accordance with our attendance intervention plan.

During the school day, Mariner Middle School maximizes in-class time with three-minute passing periods. Students must move quickly and efficiently between classes.



We researched student tardiness in the 2022-2023 and 2023-2024 school years. We learned that our students arrived to class on time **>98.5% of the time.**

We use TardyBot™ to track tardies quarterly, and students who are on-time *and* have 90% or higher attendance will be recognized and earn a treat! If you are marked late to class, TardyBot™ will record the late arrival as a minor infraction. If you receive four lates to the same class during the same quarter, the minor infraction becomes an office referral and you will earn an after-school detention. (See [ATTENDANCE AND TARDINESS](#) for additional information.)

TELEPHONES ([BACK TO TOP](#))

Telephones are reserved for school business. Parents may reach the school at (239) 772-1848. Office staff will not connect outside parties to staff members who are currently supervising students except in the case of extreme emergency.

Telephone calls will not be put through to students. Students are permitted to use the telephone at the Student Services desk with a pass from their teacher. Dismissal changes should be **planned in advance** and require parental notification to the front office prior to 11:30 AM.

Student mobile phones may be powered on before 9:35 and after 4:00 (unless the student is in a school activity and the sponsor directs them to be powered down). During the school day, your phone (any all other wireless communications devices) must be powered down completely and stowed in your backpack. Please review the section entitled [Electronic Devices](#) for more information.

TEXTBOOKS AND CHROMEBOOKS ([BACK TO TOP](#))

Basic hardbound texts, paperback books, and Chromebooks are provided for loan to the students. These books belong to the taxpayers - your parents - so take good care of them.

- Check your hardbound textbooks thoroughly when you receive it so that you won't be blamed for any prior damage.
- Your consumable textbooks (the ones that you write in) are much more fragile—take care of them! We do not have extra copies if students lose or destroy consumable textbooks.
- **Students will receive new Chromebooks or 2024-2025 and are highly encouraged to take out device care insurance. Students are financially responsible for damage to Chromebooks.**

VISITORS ([BACK TO TOP](#))

All visitors to the school must report to the front office to register. **Unregistered individuals may be trespassed by the school and could be detained by the school resource office.** Former students are welcome to visit the campus only with a teacher's request and administrative approval made at least one day prior to the day of visitation.

WITHDRAWALS AND TRANSFERS ([BACK TO TOP](#))

We don't want to see you go! But, families move—you're going to do a great job at your new school, too. To withdraw, please see the front office for help.

In general, your parent or guardian must be present with a photo ID to withdraw and/or transfer you. Students must return all materials and satisfy all fees before a withdrawal and/or a transfer can take place.